

Thank you for your purchase! At MSW® we believe having essential accessories makes a good bike ride great. Our Airlift Floor Pumps help keep bicycle tire air pressure at optimal levels for enjoyable cycling.

⚠ WARNING: CYCLING CAN BE DANGEROUS. BICYCLE PRODUCTS SHOULD BE INSTALLED AND SERVICED BY A PROFESSIONAL MECHANIC. NEVER MODIFY YOUR BICYCLE OR ACCESSORIES. READ AND FOLLOW ALL PRODUCT INSTRUCTIONS AND WARNINGS INCLUDING INFORMATION ON THE MANUFACTURER'S WEBSITE. INSPECT YOUR BICYCLE BEFORE EVERY RIDE. ALWAYS WEAR A HELMET.

For additional product and safety information go to: www.mswbike.com/safety.

COMPATIBILITY AND INTENDED USE

The MSW Floor Pump is intended for use with bicycle tires that use Presta or Schrader valves, or inflatable sporting equipment or air mattresses that use the pump's included inflator pins or nozzle.

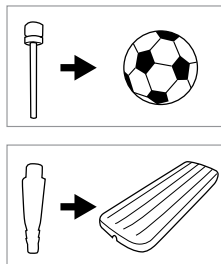
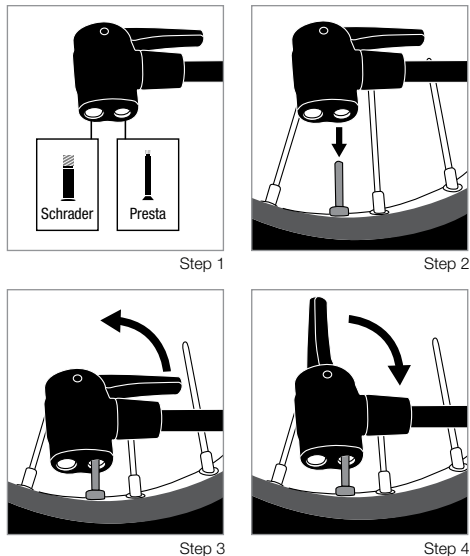
NOT COMPATIBLE with bicycle tires that have maximum pressure ratings that exceed 150 psi/10 bar, or automotive tires.

⚠ WARNING: Your safety depends on having tires and inner tubes that are the right size for your bicycle, are in good condition, and are properly installed and inflated. Always follow tire and inner tube manufacturer instructions for selecting the right tires and installing them on your bicycle. If your tires are used, check for tire bead and tire sidewall fraying or damage before inflating. If either is damaged, replace your tire. Visually inspect the tire's sidewall to ensure the bead is appropriately and evenly seated around the circumference of the rim on both sides. Inflate tires to within the specified range on the tire's sidewall. Inspect the condition of your tires and tire pressure before every ride. If you have any questions about your inner tubes, tires, proper tire installation and inflation, or use of this MSW pump, contact a professional bicycle mechanic.

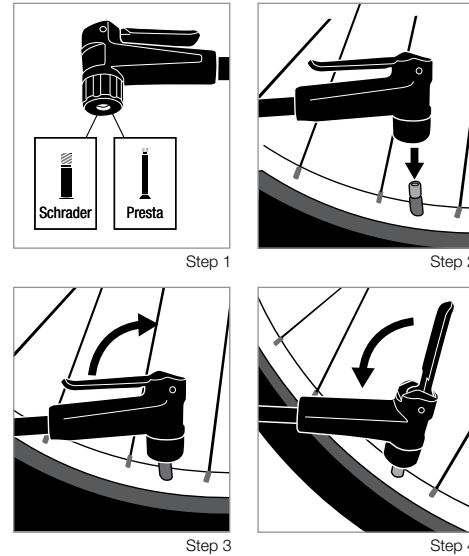
⚠ WARNING: Never inflate a tire beyond the maximum pressure marked on the tire's sidewall. Exceeding the recommended maximum pressure may blow the tire off the rim, which could cause damage to the bike and injury to the rider and bystanders.

USING THE AIRLIFT FLOOR PUMPS

FLP-100



FLP-200



NOTE: For best results, apply only enough pressure on the pump nozzle's lever to feel the lever "lock" into place. Do not force the lever into position.

ONGOING MAINTENANCE

For best results, periodically check to ensure that the pump hose is properly attached to the pump, and that the hose itself is not cracked or punctured.

WARRANTY PROCESS

If you and your shop think your MSW product is worthy of a warranty inspection, please return the product to the original place of purchase, accompanied by a sales receipt.

For complete warranty information, visit www.mswbike.com/safety/warranty.