

Thank you for your purchase! At MSW® we believe having essential accessories makes a good bike ride great. Tiger Moth 20 is MSW's handy USB rechargeable taillight. Keep it on your bike mounted to the seat post or seatstay, or easily remove it for safe storage in a commuter backpack or bag. Be seen on your rides!

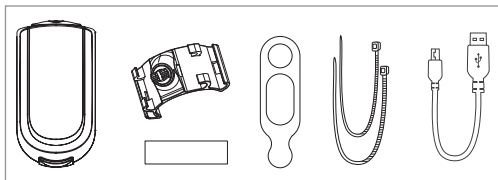
▲ WARNING: Cycling can be dangerous. Bicycle products should be installed and serviced by a professional mechanic. Never modify your bicycle or accessories. Read and follow all product instructions and warnings including information on the manufacturer's website. Inspect your bicycle before every ride. Always wear a helmet. For more information, please visit www.mswbike.com/safety.

COMPATIBILITY AND INTENDED USE

▲ WARNING: Ensure that the Tiger Moth 20 USB Taillight is placed an adequate distance away from any rotating components of the bicycle or bicycle wheels and is not obstructed by any components, accessories, or cargo.

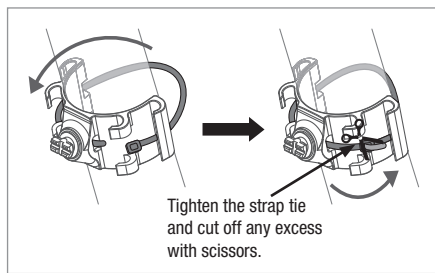
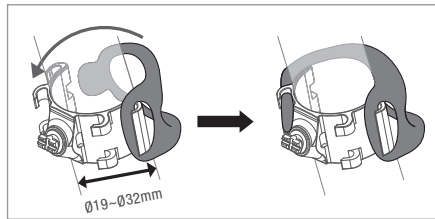
COMPONENTS

- Light
- Bracket
- Pad
- Ring
- Cable tie x 2
- USB cable

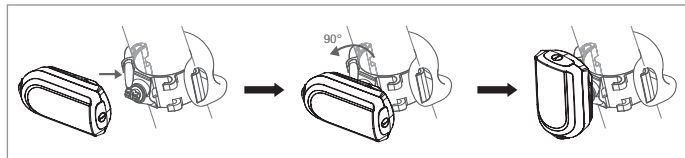


INSTALLATION

1. Install the light on the seat post, seatstay by using ring or strap.

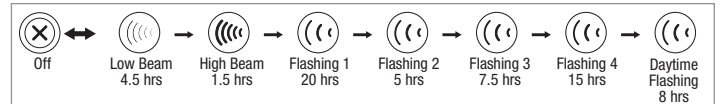
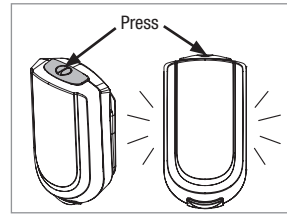


2. When the light and bracket are horizontal, install the light on the bracket, twist it 90° and fasten it.



TO SWITCH MODES

Press the button for 1.5 seconds to turn ON or OFF, and click to switch modes.



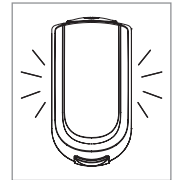
MODE MEMORY FUNCTION: When you turn the light on, it lights up in the last lighting mode you used.

NOTE: Upon full discharge, the light will enter Protected Mode and automatically restore to factory default settings. The light will be in Low Mode when charged and turned back on.

BATTERY LEVEL INDICATOR

Power OFF: Double click to show the remaining capacity.

- Constant: 100–50%
- Slow flash: 49–25%
- Fast flash: 24–0%



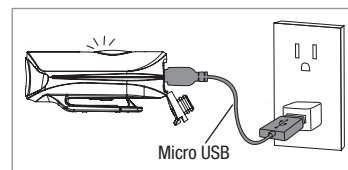
LOW BATTERY ALERT

Less than 25% battery remaining

- In constant mode: circular flashing
- In flashing mode: pulsed constant lighting

CHARGING

1. Open the rubber cover at the bottom of the light.
2. Plug in provided Micro USB cable then plug into USB port.
3. Indicator will show charging status with different colors.
 - Red: 0–24%
 - Orange: 25–49%
 - Green: 50–100%
 - Light OFF: Fully Charged



SPECIFICATIONS

- Size: 49.3 x 286.4 x 20mm
- Weight: 18g
- 20 Lumen LED: 38 chips COB LED
- Battery: Rechargeable lithium-ion polymer
- Charging: 5V / 0.5A, 2 hrs
- Accessories: Micro USB cable

ONGOING MAINTENANCE

Periodically make sure your light is securely mounted and in working order. Inspect mounting brackets for damage.

LIMITED 2-YEAR WARRANTY

MSW warrants this new MSW product against defects in materials and workmanship for two (2) years from the original date of retail purchase by the consumer. This limited warranty is expressly limited to the repair or replacement of the original product, at the option of MSW, and is the sole remedy of the warranty. This limited warranty applies only to the original purchaser of the MSW product and is not transferable.

In no event shall MSW be liable for any loss, inconvenience or damage, whether direct, incidental or consequential or otherwise resulting from breach of any express or implied warranty or condition of merchantability, fitness for a particular purpose, or otherwise with respect to this product except as set forth herein. This warranty gives the consumer specific legal rights, and those rights and other rights may vary from state to state.

This warranty does not cover the following:

- Damage due to improper assembly or follow-up maintenance or lack of skill, competence or experience of the end user
- Products that have been modified, neglected, used in competition or for commercial purposes, misused or abused, involved in accidents or anything other than normal use
- Damage or deterioration to the surface finish, aesthetics or appearance of the product
- Normal wear and tear
- Labor required to remove and/or refit and re-adjust the product within the bicycle assembly
- Installation of components, parts, or accessories not originally intended for use with or compatible with MSW products.

TO THE EXTENT NOT PROHIBITED BY LAW, THESE WARRANTIES ARE EXCLUSIVE AND THERE ARE NO OTHER EXPRESS OR IMPLIED WARRANTIES OR CONDITIONS INCLUDING WARRANTIES OR CONDITIONS OF MERCHANTABILITY AND FITNESS FOR A PARTICULAR PURPOSE.

WARRANTY PROCESS

If you and your shop think your MSW product is worthy of a warranty inspection, please return the product to the original place of purchase, accompanied by a sales receipt.

For complete warranty information, visit www.mswbike.com/safety/warranty.